



## Cap Tightener /w Torque Readout Model: NEPMT-R



*NEPMT-R Cap Tightener /w Torque Readout  
(conveyor not included)*

New England Machinery's model NEPMT-R offers cap tightening along with applied torque and settings readout. Ideal for tightening loose caps, the torque applied by the NEPMT-R will display on the HMI screen. This model also allows the operator to set a torque setpoint and/or High and Low setpoints which can work in conjunction with an optional reject system. The NEPMT-R is also designed to eliminate any rework or hand tightening which can induce repetitive task ergonomic injuries.

**Easy to Use** – The New England Machinery NEPMT-R is a freestanding, self-contained unit which installs over your existing tabletop conveyor.

**Easy to Adjust** – Hand crank or optional motorized height adjustment allows a single operator to change over the system quickly without tools.

**Reliable** – The New England Machinery NEPMT-R Inline Retorquer utilizes a belt tightening system as opposed to the traditional spindle type retorquer. The belt system allows the machinery to be in contact with the cap throughout the retorque process. This allows complete control of the cap and container. The NEPMT-R has an integrated NIST traceable transducer which allows the operator to set a torque setpoint via the machine HMI control. The torque can be displayed in real time via the HMI screen. The HMI also allows the operator to set High and Low setpoints which can be utilized with the optional reject system. The belts also provide less wear compared to the spindle rollers because there is no “bumping” and no burning of the caps during the retorque process.

**Torque Readout** – Our newest version of the NEPMT-R will allow the operator to see the applied torque as it is applied to the cap. With the PLC control there is also the ability to collect torque data and download it to a statistical data collection system in real time.

### NEPMT-R Snapshot:

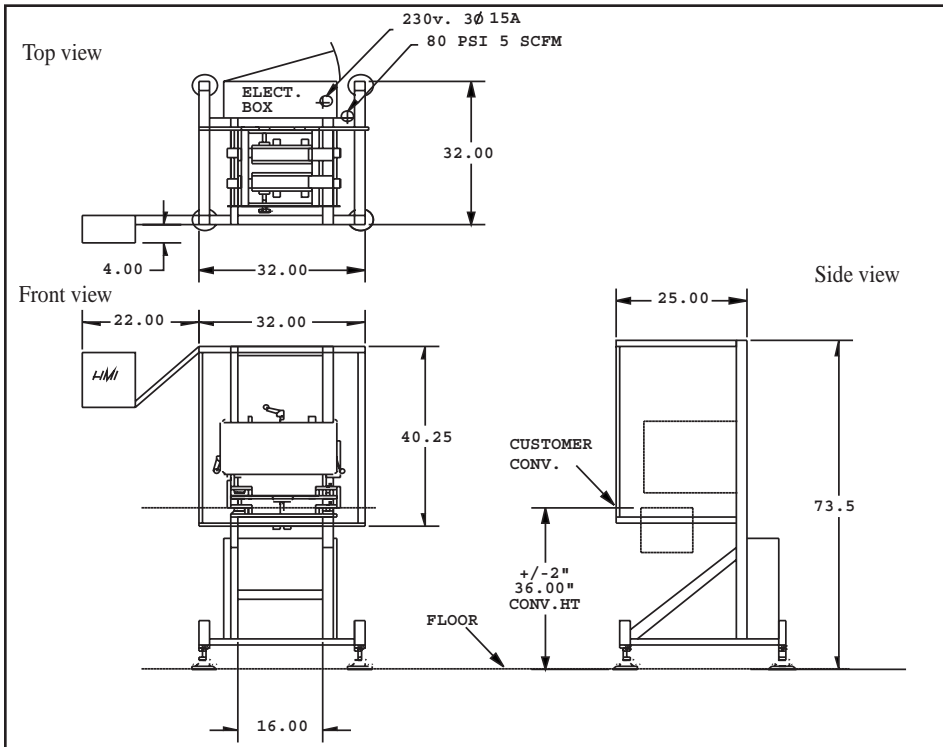
- Freestanding, self-contained unit, installs easily
- Prevents loose caps
- Allen-Bradley® PLC
- HMI touch screen
- Quick handwheel height and width adjustment with position indicator
- Reduces damage to cap serrated surfaces
- Clear acrylic guarding
- Tubular 304 stainless steel, smoothed, polished welded frame
- Anodized aluminum
- Easy changeover
- Adjustable discharge height 36" ± 2"
- Infeed side metering belts with photo eye backlog protector
- Operations and maintenance manual on CD
- NIST traceable torque display
- Mount over customers existing conveyor

**New England Machinery, Inc.**

*Innovators In Container Handling Systems*



# NEPMT-R Specifications



## ELECTRICAL FEATURES

- 220V, three phase, 50/60 Hz input requiring 15 amp service
- AC variable frequency drives
- Allen-Bradley® Micro Logic PLC
- Integral electrical enclosure.
- Rating: NEMA-12

## SPECIFICATIONS:

- Air: 1 to 2 cfm @ 80 psi

## CAP SIZE RANGE:

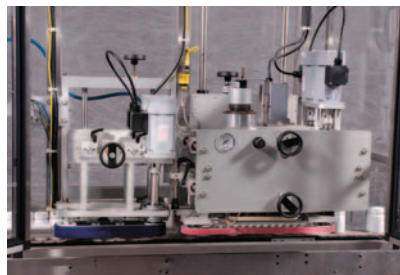
0.5" to 4.75" diameter (12mm to 100mm)  
(Special options available up to 6" diameter)  
CT/TE and CR caps

## CONTAINER SPEEDS:

Up to 150 cpm, depending on size and configuration.



Allen-Bradley® Panelview



Close-up of retorque belt section

NEPMT-R retorque can be configured to any customer specification, upon request.

**New England Machinery, Inc.**

2820 62nd Ave East, Bradenton, FL 34203 U.S.A.

941/755-5550 Fax: 941/751-6281

www.neminc.com E-mail: info@neminc.com

Changes in machine design or specifications are a result of continuous machine improvements and New England Machinery, Inc. reserves the right to change standard specifications without prior notice.

NEPMT-R 06/09

## Optional Equipment

- Dual container infeed gripper belts for tall containers
- Streamlined belts for short containers
- NEMA-4 electrical
- Trigger guide for pump cap tightening
- Left-hand discharge
- Machine status (four light post) with annunciator
- Digital container counter
- Extended range for oversized containers
- Lockable caster wheels
- Change from std. (36" ± 2") discharge height
- Upgrade to polycarbonate guarding
- Additional "E" stop(s)
- Operations and maintenance manual hard copy
- Container motion detection
- Washdown motors