



Secondary Orienter System

Model: SO-4



SO-4 Secondary Orienter
(conveyor not included)

Versatile – The SO-4 provides an inexpensive means of orienting asymmetrical rectangular and square containers with centered necks and/or handles. The SO-4 distinguishes the bottle's incoming orientation based on container symmetry, using a variety of inspection methods, and orients the bottles accordingly. Its range permits use on very large containers to small container applications. The SO-4 Orienter provides a means of orienting symmetrical or asymmetrical containers 90, 180 or 270 degrees on the customer's conveyor.

Dependable – The SO-4 provides a smooth, uninterrupted flow of correctly oriented filled or empty containers.

Compact Design – The SO-4 is a self-contained, freestanding unit. It offers an ergonomic, low profile design. Operators have easy access for changeovers.

Easy Installation – This orienter is easily installed, sliding up to the existing conveyor. The simple hand crank (or optional electric) height adjustment allows it to be raised when not in use and lowered for the next changeover.

Gentle Container Handling – The orienter provides a smooth, continuous motion, advanced custom design incorporating non-marring transfer belts. It is capable of up to 200 containers per minute, depending on the bottle size and shape.

SO-4 Snapshot:

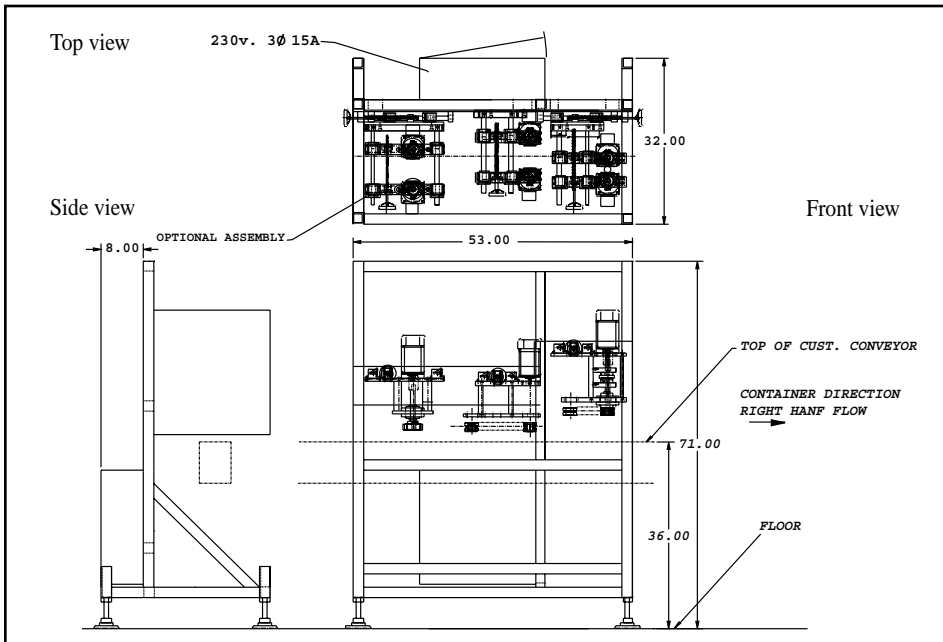
- Tubular 304 stainless steel welded frame
- Clear Anodized Aluminum components
- Clean, non-painted, non-marring surfaces
- Hand wheel adjustments for bottle height
- Clear acrylic guarding
- Adjustable discharge height 36" ± 2"
- High floor clearance
- Smoothed and Polished Welds
- One operations & maintenance manual on CD
- Easy changeover
- Mounts over customers existing conveyor

New England Machinery, Inc.

Innovators In Container Handling Systems



SO-4 Specifications



ELECTRICAL FEATURES

- NEMA-12 electrical
- 220 Volt, Three phase 50/60Hz input. Requiring 15 Amp Svc.
- Infeed belts or rollers with backlog photo eye w/automatic stop & restart
- TEFC AC motors
- AC variable frequency drives
- Allen Bradley Micro Logix 1200 PLC

CONTAINER RANGE SIZES

- Minor Axis: 3/4" to 4 3/4"
- Major Axis: 1" to 5"
- Height: 12" (or more)
- Neck diameter: .75 min. to 3.75 max.



Close-up of orienter sections

Extended range available as an option.

Container must be proportioned for orientation.

SO-4 Secondary Orienter can be configured to any customer specification, upon request.

New England Machinery, Inc.

2820 62nd Ave East, Bradenton, FL 34203 U.S.A.

941/755-5550 Fax: 941/751-6281

www.neminc.com

E-mail: info@neminc.com



Optional Equipment

- Heavy Duty Lockable Caster Wheels
- Change from Std. (36" +/-2") Discharge Height
- Digital Container Counter (Bottles Per Minute)
- Extended Range
- Left Hand Discharge
- Separation Assembly
- Motorized Height Adjustment
- Stainless Steel Construction
- Upgrade Machine Guarding to Polycarbonate
- Extra Operation and Maintenance Manual (Hard Copy)
- Additional Emergency "E" Stops
- Machine Status 4 Light Post
- Motion Detector (detects container motion downstream)
- NEMA-4 Enclosure
- Upgrade or change to other PLCs
- Allen-Bradley® HMI (human machine interface)
- Washdown motors